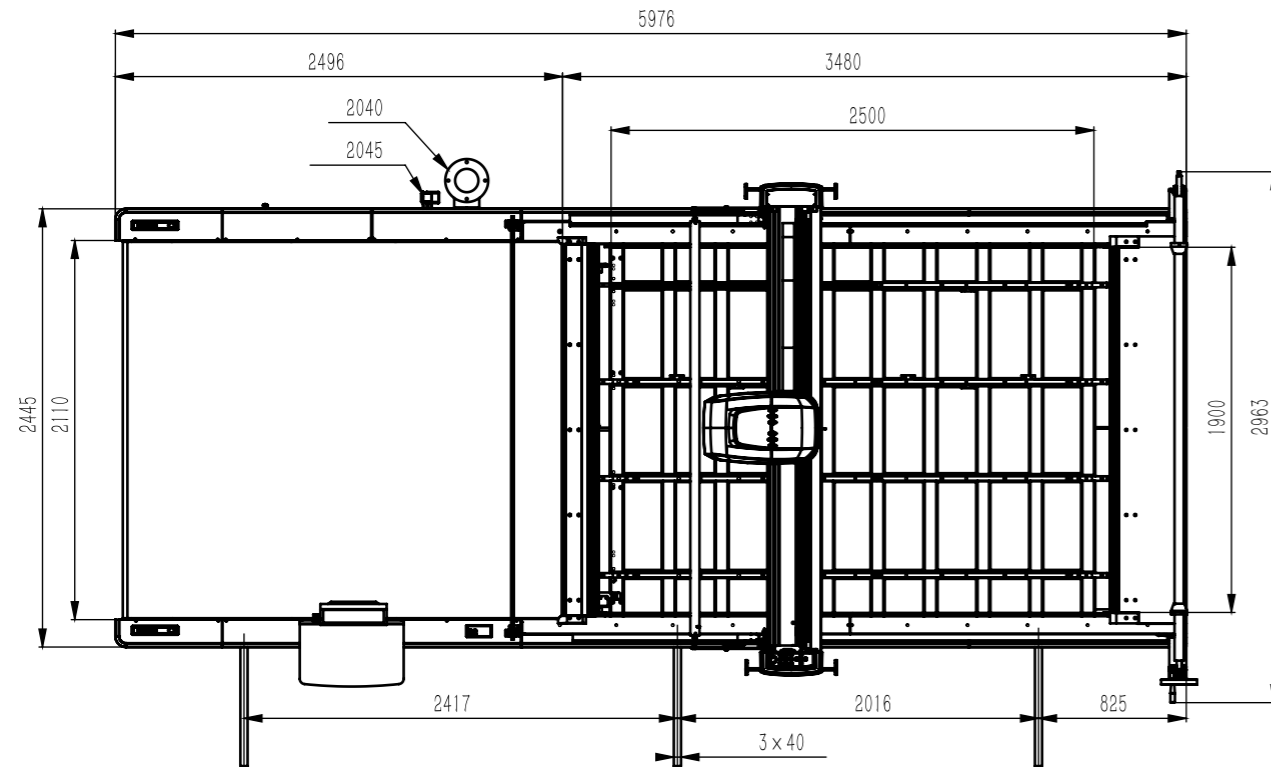


TECHNICAL PARAMETER

技术参数

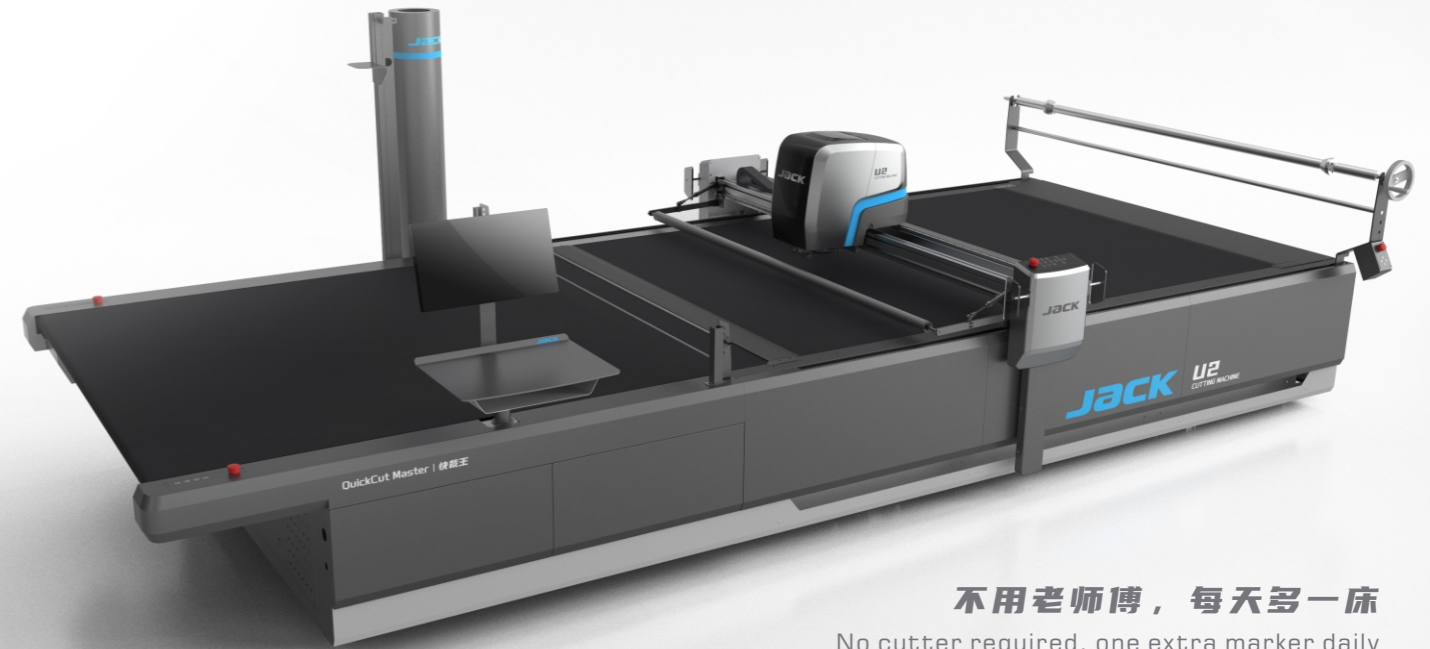
单位: mm  
Unit: mm



裁剪范围		Machine range	
长L: 2500mm	宽W: 2000mm		
最大裁剪高度	Max.Cutting height	最大定位速度	Max.positioningspeed
70mm (可选配:110mm) (Optional:110mm)		60m/min	
最大刀频	Max. Knife frequency	最大真空负压	Max.vacuum pressure
4500rpm		不低于-18Kpa	Not less than-18Kpa
噪音分贝	Noise decibel	机台高度	Machine height
80dB		86cm	
供气压力	Air compression	整机功率	Machine power
不低于0.6MPa	Not less than 0.6MPa	26kw	
		最大加速度	Max. Acceleration
		0.6g	
		最大真空流量	Max. vacuum flow
		不低于2000m <sup>2</sup> /h	Not less than2000 <sup>2</sup> /h
		机器重量	Machine weight
		3.7T	
		工作电压	Working voltage
		3P+N+PE	

14年全球  
World No.1

JACK



不用老师傅，每天多一床  
No cutter required, one extra marker daily

U2 QUICK CUT MASTER U2快裁王  
SKILL-INDEPENDENT&HIGH-EFFICIENCY AUTOMATIC CUTTING MACHINE  
去技能高效自动裁床

JACK 杰克科技股份有限公司

Add: 浙江省台州市椒江区东海大道东段1008号  
No. 1008, East Section, Donghai Avenue, Jiaojiang District,  
Taizhou City, Zhejiang Province  
TEL: +86(0)-576-88177788 88177789  
FAX: +86(0)-576-88177758

全球免费服务热线:  
Global Service Hotline:  
**400-8876-858**

www.chinajack.com

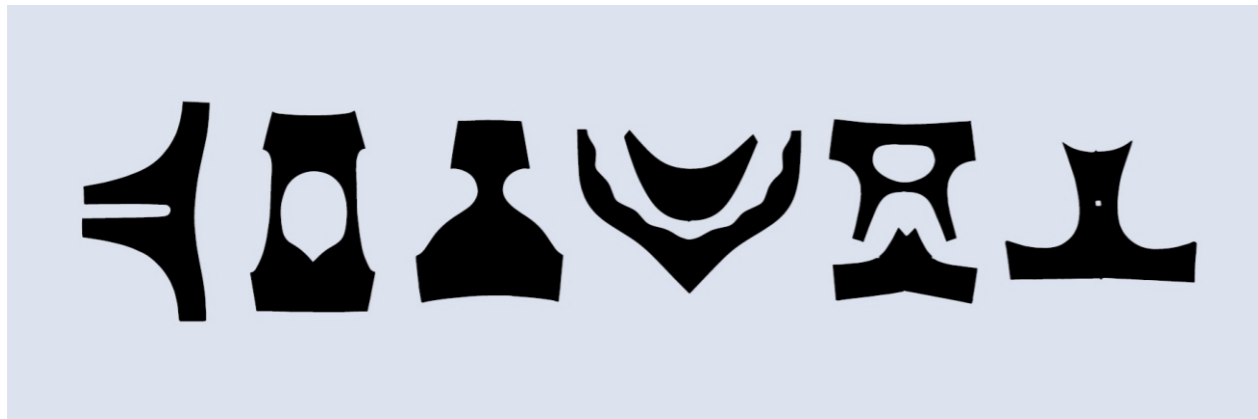


杰克股份官方微信  
Jack Corporation Official WeChat

\*数据来源:弗若斯特沙利文按全球各大工业缝纫机企业于2010年至2023年间每年的工业缝纫机销售台数统计,于2024年9月完成调研。  
\*Source: Frost & Sullivan's research based on the number of industrial sewing machines sold by major global industrial sewing machine companies in each year between 2010 and 2023, market research completed in September 2024.

## VALUE FOR CUSTOMER

### 客户价值

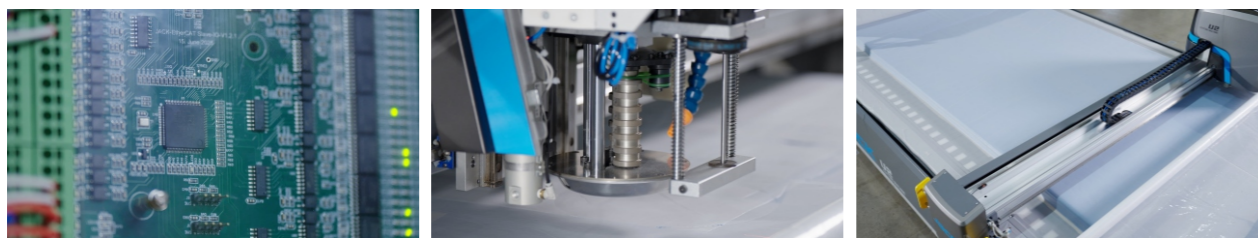


- 1、复杂版型一机抵四人                      2、机器稳定,维修少                      3、软件简单好操作,人效高

- 1、One machine equals the productivity of four people for complex patterns.  
2、Machine stable, less.  
3、User-friendly software, high efficiency maintenance.

### ① 高效→S<sup>2</sup>快裁技术:闪电快裁+幻影过窗,效率双突破

**High Efficiency → S<sup>2</sup> Fast Cutting Technology: Lightning-Fast Cutting + Phantom Window Pass, Double Efficiency Breakthrough**



- **速度优化算法:** 曲线 / 角 / 剪口匹配最优速度, C轴转速提升近2倍, 匹配动态真空算法, 减少裁剪停机补气, 效率提升7%;  
**Speed Optimization Algorithm:** Optimal speed matching for curves, corners, and notches. C-axis speed nearly doubled, combined with dynamic vacuum algorithm to minimize cutting stops for air refill, improving efficiency by 7%.
- **移动磨刀:** 单次磨刀≤1s, 裁剪中磨刀时间几乎为“0”, 效率再升2.8%;  
**Moving Knife Grinding:** Single grinding ≤1s, grinding time during cutting nearly zero, efficiency further increased by 2.8%.
- **过窗快:** 刀具打十字标识, 清晰易识别, 高精度闭环控制, 传送精度从≥10mm 缩至1mm, 快速确认, 确认步骤减少40%;  
**Fast Window Crossing:** Cross mark indicators on the tool, clear and easy to identify. High-precision closed-loop control, conveyance accuracy improved from ≥10mm to 1mm, quick verification with 40% fewer steps or one-click cutting.

### ② 去技能——极简操作+智能指引, 新手易上手

**Skill-Independent Operation → Simplified Operation + Smart Guidance Easy for Beginners**



- **软件极简:** 全自主裁剪工艺软件, 极简操作, 易学易用; 无需“回零点”, 开机即用; 内置常用面料参数, 换款一键调用。
- **硬件适配:** 操作侧多个功能面板排布, 操作便捷;
- **故障提示,** 新手可排查基础问题。
- **Simplified Software:** Fully autonomous cutting process software, simple operation, easy to learn and use; no need to return to zero, ready to use at startup; built-in common fabric parameters, one-click fabric switching.
- **Hardware Adaptation:** Multiple functional panels on the operator side for convenient use.
- **Fault Alerts:** Allow beginners to troubleshoot basic issues.

### ③ 强稳定性

**Strong Stability**



- **EtherCat电控系统+自研板卡,** 1ms极速通讯, 速度快且稳定;
- **CPU采用12代主机处理器,** 单核性能超友商58%, 响应更快, 运行更稳定;
- **裁头核心零件采用德玛吉+马扎克加工中心精度自制及检验,** 精度高, 稳定性更强。
- **EtherCat Electric Control System + Self-Developed Board:** 1ms real-time communication, fast and stable.
- **CPU: 12th Gen host processor,** single-core performance exceeds competitors by 58%, faster response, more stable operation.
- **Core Components of the Cutting Head:** Precision-manufactured and inspected using DMG + Mazak machining centers, ensuring high accuracy and stronger stability.
- **U2 快裁王, 重新定义中小服装厂裁剪效率**
- **U2 quick cut master, Redefining Cutting Efficiency for Small and Medium-Sized Garment Factories**